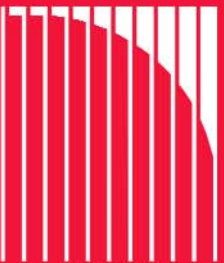


# Video

# PEEK



# VideoTrak IQ

## Multi-Channel Video Traffic Detection System

### Overview

Video-Trak-IQ is Peek Traffic's latest innovative product in the video traffic detection line. Combining the pedigree of the ground-breaking multi-channel VideoTrak line and the ease-of-use features of the single channel UniTrak products, VideoTrak-IQ is truly the best of both worlds. With the ability to view and monitor four video channels at a time using a single card or shelf-mounted unit, and the ability to configure zones interactively onscreen using a standard monitor and mouse, VideoTrak-IQ makes multi-channel traffic monitoring easy to use and powerful.

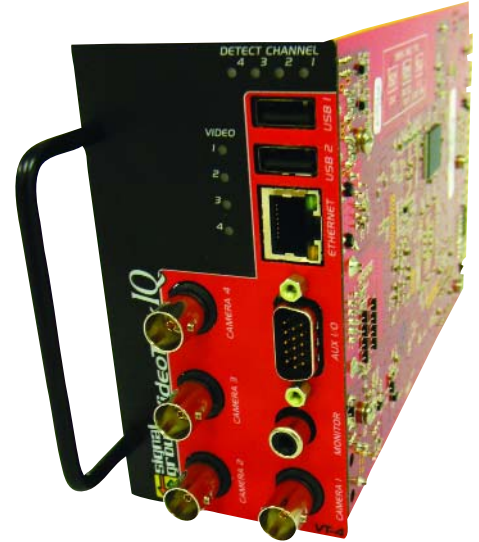
VideoTrak-IQ displays on-site traffic scenes with visual verification of proper zone placement and proper vehicle detection. It also provides a flexible, easily modified configuration of as many as 26 detection zones per channel. And as with all of the VideoTrak and UniTrak products, the fundamental value of VideoTrak-IQ is that it reduces high maintenance costs and inefficient intersection operations caused by the failure of traditional detection loops buried in road surfaces.

### Powerful Camera Options

The VideoTrak-IQ cards are backward compatible with VideoTrak and UniTrak cameras. And they can also be used with the new VideoTrak-IQ color camera with integrated coax control to utilize advanced features and faster install times.

#### Camera Lens Control 'Over the Coax'

The new VideoTrak-IQ color camera provides a powerful new control option: Lens Control 'Over the Coax'. The zoom and focus settings of the camera can be controlled from the VideoTrak-IQ user interface at the cabinet (on the ground) with no additional wiring.



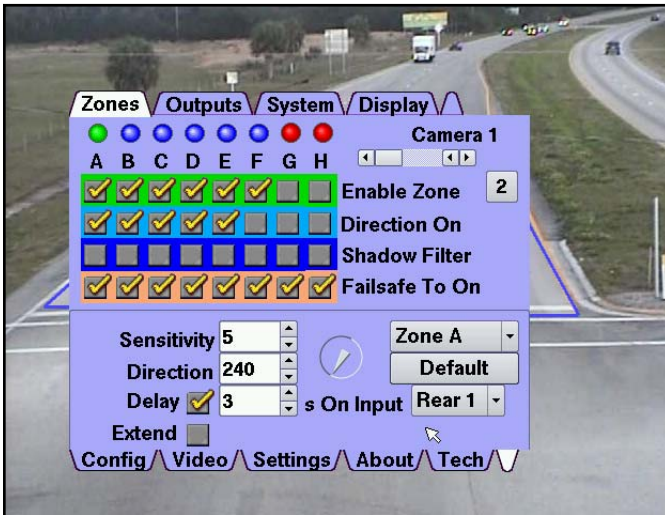
*VideoTrak-IQ 4 Channel Video Detection Card*

### Features

- 4 camera video detection system in the space of a single 4 channel loop detector card
- Advanced video detection algorithms utilizing dual processors for superior detection accuracy
- Individual zone sensitivity
- Zone-by-zone directionality
- Ethernet Port – units are 'IP-Addressable'
- MPEG-4 video streaming over Ethernet for hi quality remote video viewing
- Multiple USB 2.0 connectors
  - USB Mouse
  - USB Flash Drive support
- No PC required for setup – just a mouse and a monitor
- Hi-resolution user interface provides fast and intuitive configuration
- A three-color status LED for each video channel
- Quad screen video display allows for full intersection viewing at one time
- Rack or Enclosed Box Shelf mount options

## Advanced Features

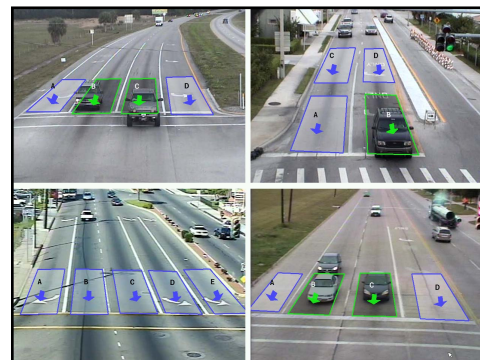
- Hi-Z video inputs allow loop through of camera video to other video equipment/recorders
- Zoom/focus over coax
- Front or rear video inputs
- Control signals on rack edge connector include 4 detect outputs, 4 NEMA TS2 status outputs and 2 Delay/Extend enable signals
- Edge outputs selectable as fully compliant to NEMA or CALTRANS standards
- Aux I/O connector on front panel provides additional inputs and outputs and allows for direct wiring to cabinet terminals, or connection to extension cards for routing detections to other rack slots.
- Differential video inputs for minimizing ground loop noise and interference noise rejection
- Equalization and automatic video level correction compensates for the effects of long video cable runs
- Non-volatile FLASH memory for system robustness and easy field firmware upgradability
- Battery backed Real Time Clock
- Remote monitoring and configuration



VideoTrak-IQ Configuration Environment

## Specifications

Power consumption	(4 channel VideoTrak-IQ) 540mA @ 12V (6.5W) 290mA @ 24V (7.0W)
Voltage	10-26 VDC
Standards compliance	NEMA TS1/TS2, Type 170/179, or 2070 ATC
Environmental	-40C to +85C (-40F to +185F)
Dimensions	Height: 4.50" (114.3mm) Width: 2.34" (59.4mm) Depth: 6.88" (174.6mm) Handle: 1.09" (27.8mm)
Front Panel Connectors	(4 channel VideoTrak-IQ) <ul style="list-style-type: none"> <li>• BNC video inputs 1-4</li> <li>• Two USB ports</li> <li>• Ethernet port</li> <li>• Aux I/O port</li> <li>• RCA video output</li> </ul> (2 channel VideoTrak-IQ) <ul style="list-style-type: none"> <li>• BNC video inputs 1-2</li> <li>• Two USB ports</li> <li>• Ethernet port</li> <li>• Aux I/O port</li> <li>• RCA video output</li> </ul> (1 channel VideoTrak-IQ) <ul style="list-style-type: none"> <li>• BNC video input</li> <li>• Two USB ports</li> <li>• Ethernet port</li> <li>• Aux I/O port</li> <li>• RCA video output</li> </ul>
Front Panel LED Indicators	(4 channel VideoTrak-IQ) <ul style="list-style-type: none"> <li>• Detect Channels 1-4</li> <li>• Video Signals 1-4</li> </ul> (2 channel VideoTrak-IQ) <ul style="list-style-type: none"> <li>• Detect Channels 1-4</li> <li>• Video Signals 1-2</li> </ul> (1 channel VideoTrak-IQ) <ul style="list-style-type: none"> <li>• Detect Channels 1-4</li> <li>• Video Signal LED</li> </ul>



Quad Channel Display



A Signal Group Company  
Peek Traffic Corporation  
2906 Corporate Way, Palmetto, FL 34221  
Phone: (941) 845-1200 • Fax: (941) 365-0837

