



Shaping the Future of Integrated Mobility

Data Collection

TOPS[®] Traffic Operations Planning Software

User-friendly Windows-based software is essential for efficient operation of modern digital recording traffic counters and classifiers. TOPS fully supports your operations in a Windows 98, NT/2000 environments. This robust 32-bit application can operate on a stand-alone PC or in a network environment. All data transfer is handled in a fast binary format.

The TOPS program employs powerful database facilities while providing an incredibly easy-to-use interface for traffic data collection, editing, and reporting. TOPS processes any file created from a Peek ADR recorder and imports data from other equipment. The program displays reports produced from the data on-screen in spreadsheet format for editing and direct printing.

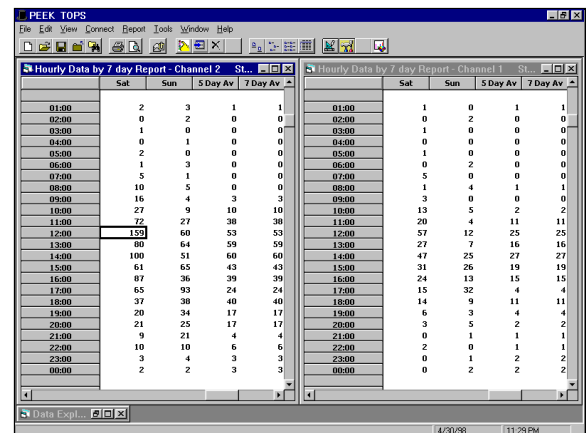
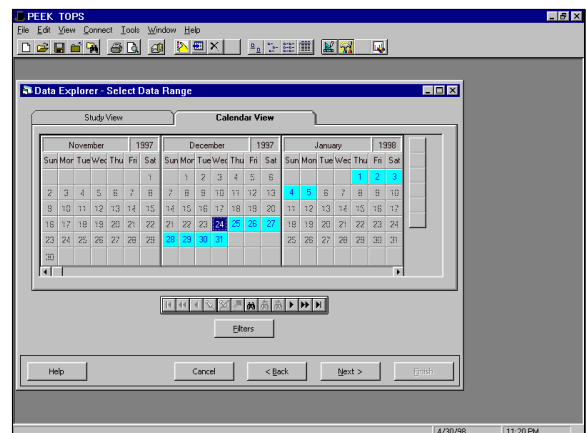
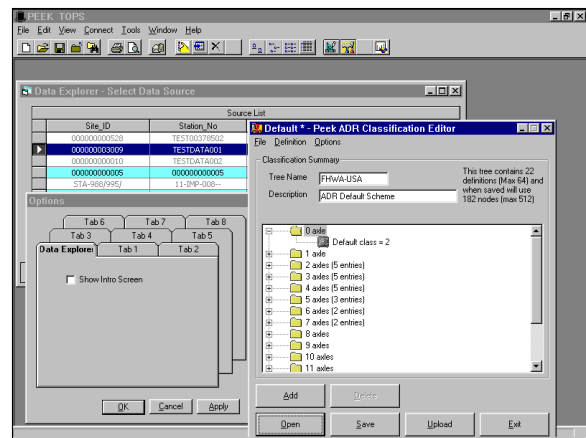
Because it's Windows-based, TOPS provides standard Windows features such as cut, copy, and paste—allowing you to easily move data within the program or between TOPS and other Windows-based programs. Create and save customized reports this way.

TOPS supports essential “truth in data” records. Original data files are retained in their native form as a built in backup facility.

TOPS also uses a helpful wizard interface to get new users quickly up to speed with program operations.

Features

- Easy to use - Easy to learn
- Windows 32-bit platform
- Smart graphic user interface
- Fast data select by your criteria
- Full function editing
- Dynamic reporting
- Pop-up wizards
- Merge, copy, click and drag functionality
- Export to other applications



URBAN

INTER-URBAN

PARKING

PUBLIC TRANSPORT

SERVICE

Specifications.

Characteristic	Description
Operational..... Characteristics	TOPS is an extensive data analysis software package that allows you to set up ADRs, retrieve ADR data, edit data, and create customized reports. The program is flexible and easy to learn and use. Smart Wizards assist you with specific tasks. Collected data is held secure in the original files to protect from unintentional erasure. Editing is fully supported and contained within the spreadsheet environment to support "truth-in-data" standards. TOPS facilitates ADR field unit setup, configuration, and interrogation, and it will read and store all ADR files and generate reports and graphics that can be saved, exported, or printed. Toolboxes, buttons, status bars and smart icons provide point and click operation.
Data Explorer	A "Site/Study/Data"-oriented interface provides freedom from files and directories. Select, filter, and sort by site, study, type of data, region, group, or a variety of criteria. A data-graphic calendar can display data availability. You can define a data set for precise analysis and reporting ranging from portable road tube counts, up to and including multiple lane Weigh-In-Motion. Capabilities include: multiple sites, multiple studies, with up to 64 channels (lanes) of volume, headway or gap, and classification incorporating speed, length, type, weight, direction, or other combined criteria.
Report Wizard.....	The Report Wizard provides local or area wide traffic data analysis and reports incorporating a user-defined mix of data. Data is presented in a graphical spreadsheet format that allows you to edit on screen using click and drag and copy and paste functionality. Direct printing is supported for Windows-supported printers. Reports can also be printed to file or copied into other application software.
Setup Wizard	The Setup Wizard allows you to create custom-recording setups for field operations. The wizard provides step-by-step guidance through creation, name, description, and save actions. Autoexec setups can provide automatic load and run convenience with PCMCIA cards.

Characteristic	Description
ClassTree Wizard ...	ClassTree operations expand the classification capabilities of ADR equipment to define vehicles using more than just the number and spacing of axles. Using the Class Wizard you can prepare new algorithms incorporating a mix of number of axles, axle spacing, length, per axle and gross weight, allowing TOPS to more accurately determine vehicle type. The ClassTree supports 64 vehicle types with up to 14 axles defined using 512 definition nodes.
Data Transfer..... Wizard:	Collect, copy, or move all types of ADR data, setup, and ClassTree files to and from units using smart file icons in a graphic transfer window. The Data Transfer Wizard auto-searches for ADR connections and sets matching baud rates automatically. PCMCIA cards are supported with an appropriate interface.
Hardware..... Requirements	Supplied as a single CD-ROM disk, program files are self-extracting and self installing on compatible hardware and software platforms. A CD ROM drive is required for installation. TOPS runs on any Windows 98, NT/2000 platform. This allows operation on a wide variety of desktop or laptop computers and some palmtops. Peek recommends at least a 100 MHz Pentium, 32MB RAM and 1 Gig of hard disk storage. A preferred system would be a 200MHz or higher Pentium processor, 128 MB RAM and a 3 Gig or more hard disk. Serial communications require a high speed 16550 UART that may be set as Com 1, 2, 3, or 4.

Two Year Limited Warranty

Peek Traffic, Inc. warrants this product against manufacturing defects in materials and workmanship for two years from date of shipment from Peek. Specific contracts and regional laws may vary or alter these terms.

Call your nearest Peek office for more information.

United States
Corporate Headquarters
Peek Corporation
2511 Corporate Way 34221
tel:1 941 845 1200
toll free in the US:1 866 260 7335
fax:1 941 365 0837
usinfo@peekglobal.com

United Kingdom
Peek Traffic Ltd.
Kings Worthy
Winchester
Hampshire SO23 7QA
tel:+44 1962 883200
fax:+44 1962 884026
ukinfo@peekglobal.com

The Netherlands
Peek Traffic BV
PO Box 2542
3800 GB
Amersfoort
tel:+31 33 454 1777
fax:+31 33 454 1850
nlinfo@peekglobal.com

www.peekglobal.com

Norway
Peek Trafikk AS
Brynsveien 12
0667 Oslo
tel:+47 23 19 09 00
fax:+47 23 19 09 15
noinfo@peekglobal.com

Additional offices in: Croatia, Denmark, Finland, Israel, Sweden

Please call Peek 's U.S. office for customer inquiries from North, South and Central America. Call Peek's U.K. office for customer inquiries from Asia, Africa, Oceania, Greece, Turkey and Cyprus. For sales inquiries from other European countries where Peek is not located, contact Peek 's office in The Netherlands. Learn more about how Peek is shaping the future of integrated mobility by visiting the new Peek Web site at www.peekglobal.com.

Information furnished by Peek is believed to be accurate and reliable, however Peek does not warranty the accuracy, completeness, or fitness for use of any of the information furnished. No license is granted by implication or otherwise under any intellectual property. Peek reserves the right to alter any of the Company 's products or published technical data relating thereto at any time without notice.